

Frequently Asked Questions

What is Source Water Protection?

Source Water Protection is the prevention of contamination to a water supply.



Why do water supplies need protection?

Pollution that is released into the soil, water bodies, or groundwater, jeopardizes water supplies that our communities use for drinking water and recreation. Pollution can increase the cost of water treatment, or make treatment impossible, forcing communities to find new sources of drinking water.

What could pollute my local water supply?

Chemicals that can pollute water supplies are found in fuels, pesticides, herbicides, fertilizers, industrial chemicals, and other hazardous materials. Spills, polluted runoff, and earth disturbances such as drilling can pose a potential threat.

What is the role of my local government in Source Water Protection?

Water suppliers work with local government officials in developing and implementing source water protection programs. Local government officials have the power to prevent pollution by planning ahead to conserve land and water, and fairly enforcing regulations to reduce polluted runoff.

Are state and county governments helping?

Yes. The Pennsylvania Department of Environmental Protection (DEP) and Lycoming County have partnered to assist public water suppliers in our region. They provide technical assistance, planning, and public education and outreach. We believe that Source Water Protection is most successfully achieved through partnerships.

North Central Source Water Protection Alliance Members & Advisors



Montoursville Borough



Montgomery Water Authority

LaPorte Borough

West Branch Regional Authority



MISSION:

The North Central Source Water Protection Alliance serves to protect the region's drinking water sources from all Potential Sources of Contamination (PSOC) by proactively evaluating susceptibility to contamination, working to minimize or eliminate specific potential threats, creating long-range strategies to protect sources, encouraging local planning and inter-municipal coordination efforts, and educating the public about source water protection.

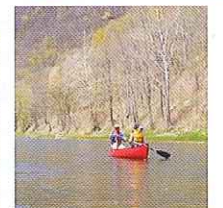


President: Mike Zellers, Manager, Jersey Shore Area Joint Water Authority (570) 398-1443 mike@jerseyshowerater.com
DEP North Central: Mark Stephens, P.G., Groundwater Geologist (570) 327-3422 mstephens@pa.gov



NORTH CENTRAL
SOURCE WATER
PROTECTION
ALLIANCE

Working Together to Provide
Safe, Clean Water—for Today's
Families and Future Generations



What Can I Do?

- Report spills immediately! Call 911. The dispatcher will follow protocol to alert the appropriate authorities.
- Never pour used motor oil onto the ground or in a storm drain.
- Store, handle, and dispose of household hazardous materials safely. Contact your local solid waste facility (landfill) for disposal information.
- Visit earth911.com to search for recycling centers near you that accept specific materials, such as motor oil or batteries.
- Don't flush unwanted medications! Sewage treatment plants can't remove drugs from the water. Look for a drug collection event in your community, or place medications in a sealed container in the trash.
- Plant trees and shrubs, or at least stop mowing, along stream banks. Plants are natural filters that help to clean polluted runoff before it reaches the water. Roots help to hold the stream banks together, reducing erosion.
- Minimize the use of pesticides and herbicides on your lawn and garden.
- Wash your car on the lawn, not on a paved surface.
- Keep animals, including livestock, and their waste out of local streams.
- Pump your septic system regularly.
- Join your local watershed organization.
- Participate in conservation projects such as trash clean-ups, tree plantings, and stream restoration events.
- Encourage your local government officials to get involved with the North Central Source Water Protection Alliance.

Cleaning up polluted sites can cost 200 times more than prevention

Some pollution incidents ruin a water supply forever



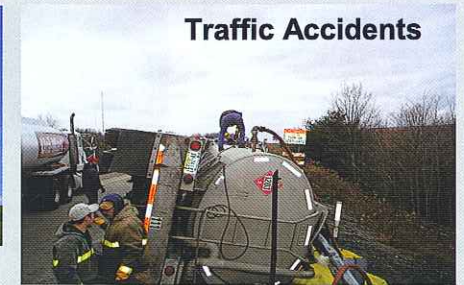
Agricultural Runoff



Heating Fuel Tank Spills



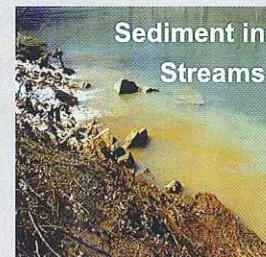
Drilling



Traffic Accidents



Logging Activities



Sediment in Streams



Auto Fluids in Roadway Runoff



Pits & Impoundments

Source Water Protection activities...preserve our quality of life!



Spill Response Signs



Water Quality Monitoring



Streamside Buffer



Porous Pavement



Rain Gardens

